

Connecting to Guest – Windows Vista

For **Guests** of Millsaps Faculty, Staff, and Students

Areas with Wireless Access

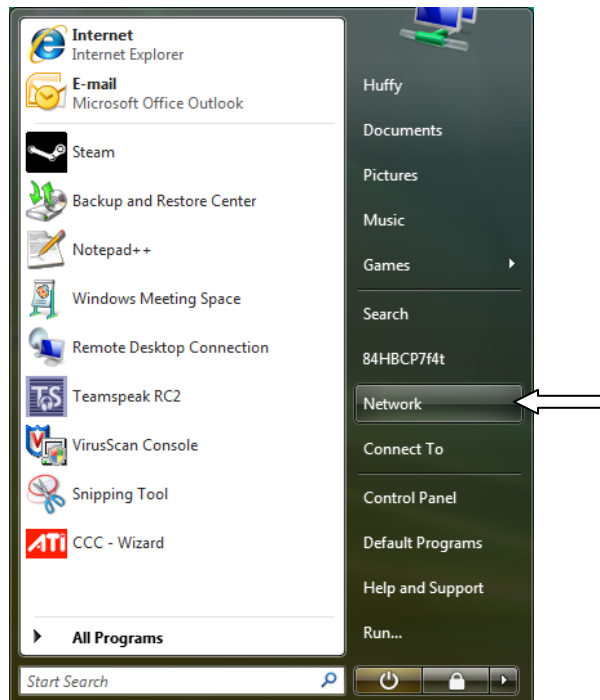
As the campus wide wireless plan nears completion areas will continuously be added to the list of active Hotspots. At this point connection to the wireless network is available in all academic, residential and instructional areas. Connection to the wireless can also be reached in athletic facilities, the Millsaps Bowl, and the Plaza, which is located adjacent to the Student Center and the HAC. For the most up to date availability list, visit <http://www.millsaps.edu/wireless>.

Requirements for Access

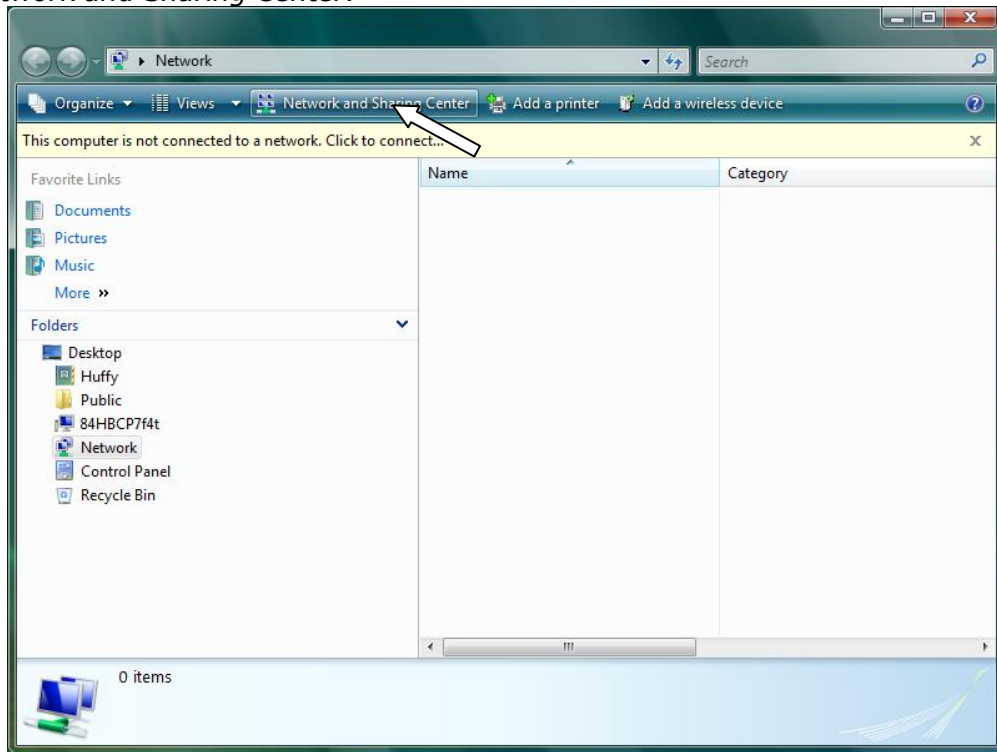
You must have a computer equipped with an 802.11b/g-compatible wireless card and device's latest drivers.

Step 1 – Connecting to the Guest Network

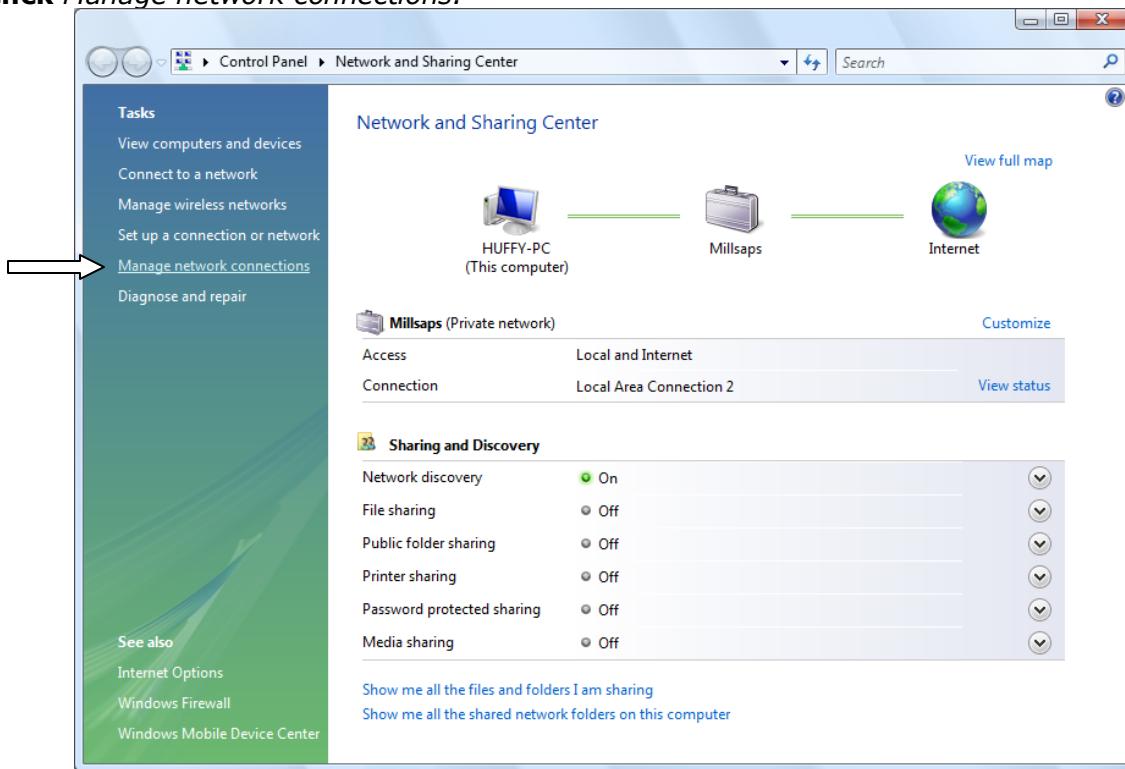
Turn on your computer and make sure that the wireless card is activated. To do this **Select Start | Click Network**.



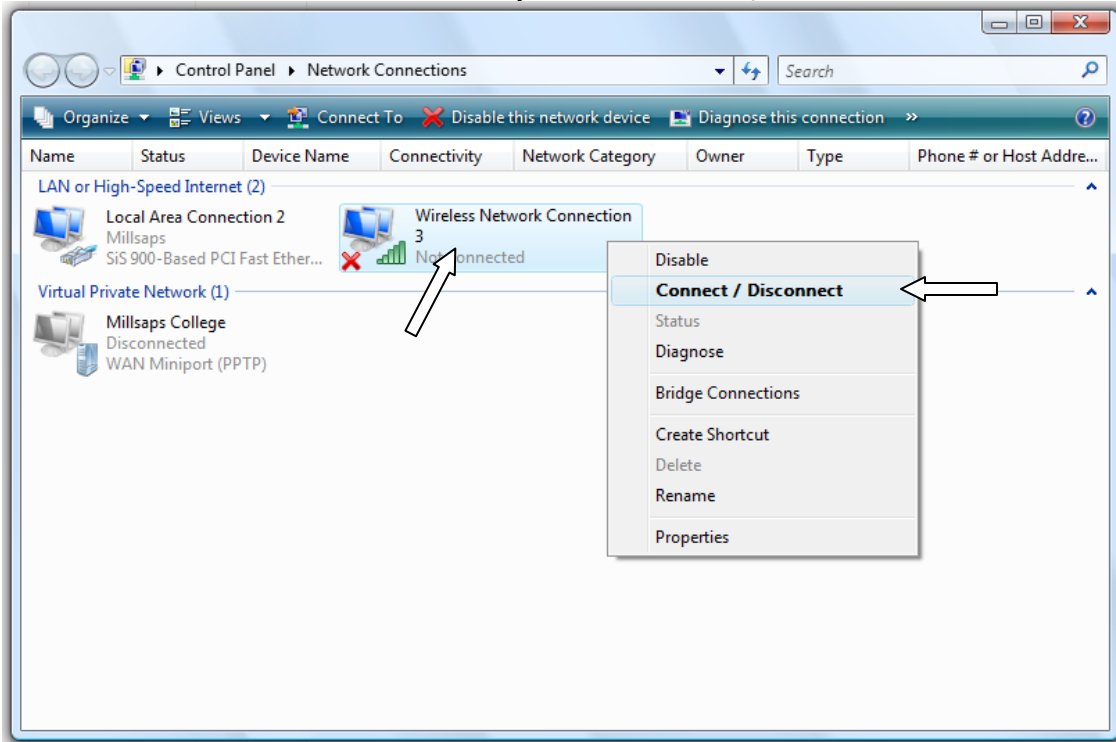
Click *Network and Sharing Center*.



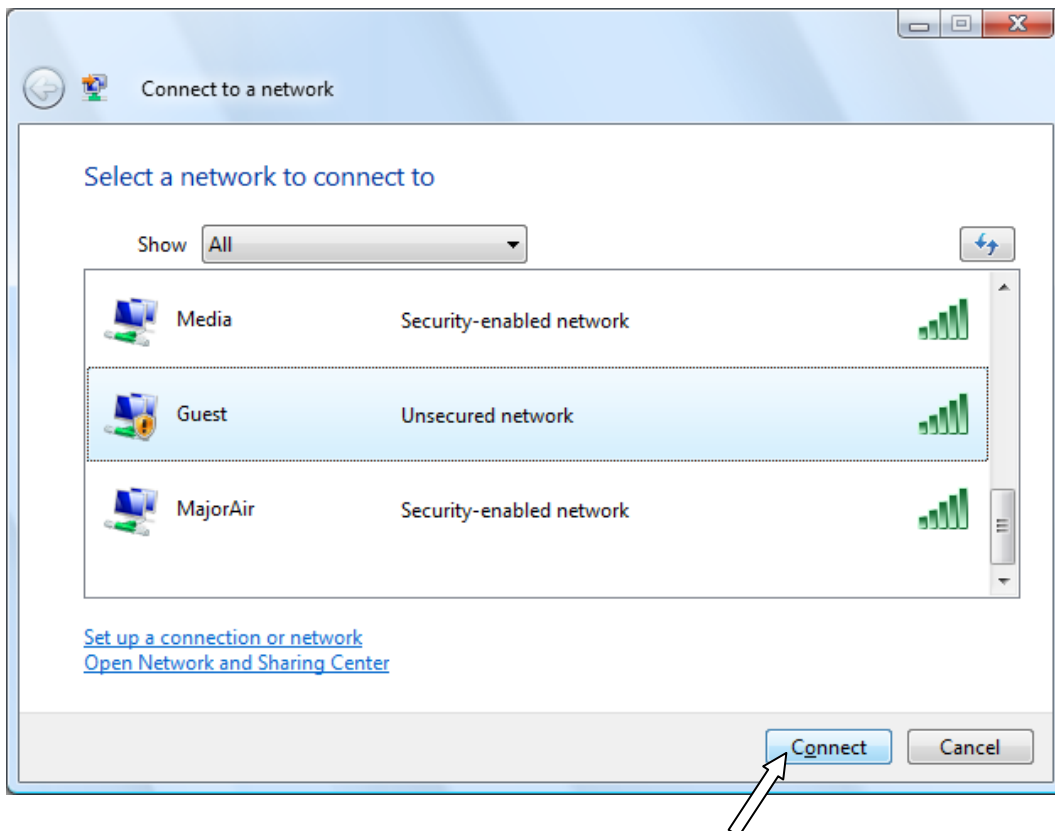
Click *Manage network connections*.



Right Click *Wireless Network Connection* | **Select** *Connect / Disconnect*.



Select *Guest* | **Click** *Connect*.



Step 2 – Agreeing with the Millsaps College Policy for the Ethical Use of Computing Facilities

Open *Internet Explorer*.

Your browser will automatically be redirected to the Aruba login screen. Please take a moment to read the *Acceptable Use Policy*.

Type in your email address under *Guest User*.

Click *Log In*.



The image shows a screenshot of the Aruba login interface. On the left, there are two login sections: 'REGISTERED USER' and 'GUEST USER'. The 'REGISTERED USER' section has fields for 'USERNAME' and 'PASSWORD', and a 'Log In' button. The 'GUEST USER' section has an 'EMAIL' field and a 'Log In' button. A white arrow points to the 'EMAIL' field. Below the 'GUEST USER' section, there is a note: 'Logging in as a guest user indicates you have read and accepted the Acceptable Use Policy.' On the right, there is a large blue box with the text 'Welcome to Millsaps College.' and the 'ARUBA' logo in large, stylized letters.

After logging in as a Guest User you will receive confirmation of successful authentication. This screen will automatically redirect you to your homepage in ten seconds.

For assistance, please call, email, or visit:

HelpDesk at 601-974-1144, HelpDesk@millsaps.edu, or Academic Complex 105

Support for Millsaps Faculty, Staff, Graduate Students, Commuter Students, and Guests
Open Monday-Friday from 8am-8pm

ResNet at 601-974-1899, ResNet@millsaps.edu, or New South Hall 125

Support for On-Campus Undergraduate Millsaps Students
Open Sunday-Thursdays from 6pm-10pm and Friday-Saturday from 1pm-5pm